

E. BOOTH.

Bee Hive.

No. 2,861.

Patented Nov. 28, 1842.

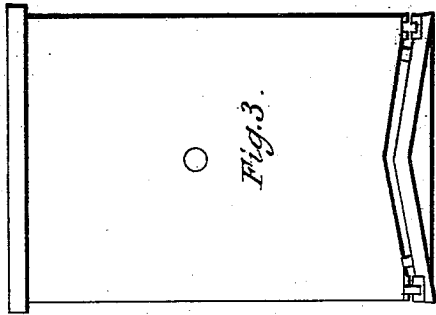


Fig. 3.

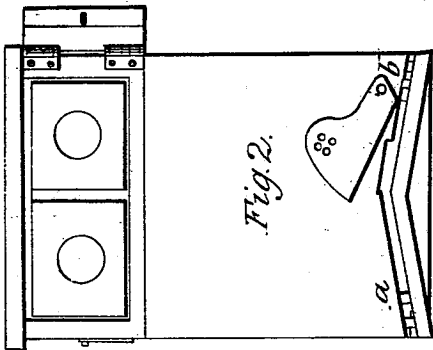
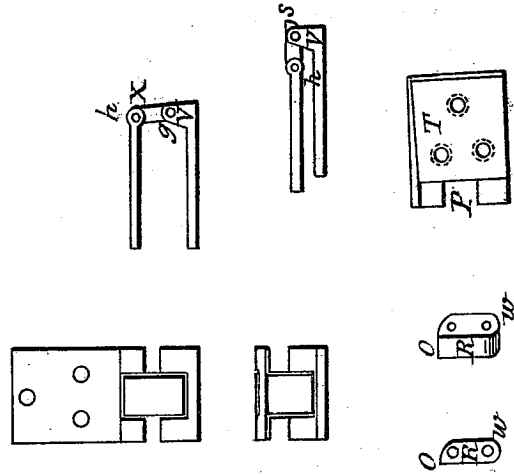


Fig. 2.

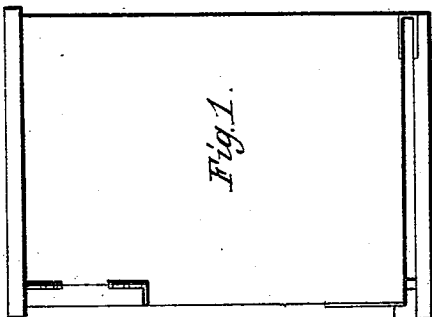
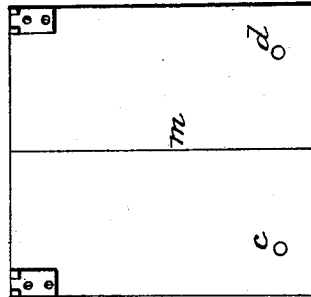
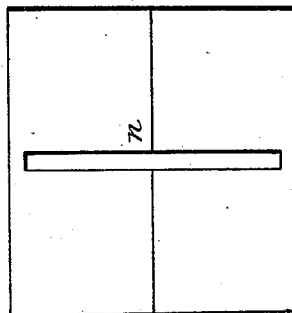


Fig. 1.



UNITED STATES PATENT OFFICE.

EDWIN BOOTH, OF SPRINGFIELD, MASSACHUSETTS.

BEEHIVE.

Specification of Letters Patent No. 2,861, dated November 28, 1842.

To all whom it may concern:

Be it known that I, EDWIN BOOTH, of Springfield, county of Hampden, and State of Massachusetts, have invented a new and
5 Improved Beehive, which I call and denominate the "Perfect Hive;" and I do hereby declare the following to be a full and exact description thereof.

The "perfect hive" consists of chambers
10 drawers and other fixtures and appurtenances and may be of any convenient dimensions for use that may be deemed practicable. The form I most approve and recommend for use is twenty-two inches in
15 height the sides forming a square of fourteen inches which are plane surfaces as is also the top. The bottom consists of two single planes of equal dimensions united together as at *m* so as to form an obtuse angle
20 downward, the most approved I consider about 156 degrees, constituting together a double inclined plane, so formed that the inclination is either to the right and left sides of the hive when taking a front view
25 as seen at Fig. 2, or the bottom may be turned one quarter around and the inclination be to the front and back sides of the hive.

One or more cleats as at letter *n* are
30 placed on the underside of the bottom for the purpose of giving more strength and firmness to the plane. On its upper surface near the front corners are inserted two pegs
35 *c, d* about half an inch in diameter and projecting upward about one third of an inch on which the front part of the hive rests when elevated as at *a, b* Fig. 2, and which
40 pegs are within the body of the hive when it is depressed or at rest on the plane. The bottom is attached to the body of the hive by double elevating nuts or hinges which are constructed as follows.

The hinge consists of three pieces exclusive of the pins or bolt which connect the joint.
45 I prefer having the lower piece or plate about seven-eighths of an inch wide and one and one-fourth inches long having ears projecting upward about one-fourth inch, marked
50 *V*, which receive one end marked *O* of a tumbler *R* thus forming one of the joints as seen at, *g*,—this end of the tumbler has a shoulder as seen at, *s*, for the purpose of

preventing the hinge passing farther back than a perpendicular when elevated as at, *X*. The upper plate is of similar dimensions
55 and is like to that half which receives the loop part of the hinge of a common door butt—this upper plate marked, *T*, receives at *P*, the round end of the tumbler, *U* thus forming the second joint seen at, *h*, which
60 together form what is above described as a double elevating hinge. The tumbler is made of a straight piece and the most convenient dimensions I consider in width and thickness three eighths of an inch and in
65 length three fourths of an inch rounded at one end as at, *U* and with a shoulder at the other as seen at *O*, and *S*.

To elevate the hive, it being at rest on the plane, raise it perpendicular half an inch or
70 more to clear the front side of it, of pegs which are in the bottom board or plane as at, *c, d*, when in this position press the hive horizontally backward until the tumbler of the hinge is at a perpendicular as seen at, *x*,
75 and the front of the hive will rest on the pegs as at, *a, b*, and be in the position as seen in Figs. 1, 2, 3. The reason for elevating it is to prevent the bee moth and worm and other insects from finding a lodgment in the
80 joints or crack or seams of the hive when it is in contact with the bottom, or is at rest on the plane, and also for the purpose of giving the bees free egress and ingress. When the hive is to be lowered from this
85 position raise the body from the pegs and move it forward far enough to clear the front side from the pegs and then lower it till it rests on the bottom. It is brought to this position for the purpose of protecting
90 the bees from cold and wet from enemies and also for confining them for any purpose whatever.

What I claim as my invention and as new and for which I desire Letters Patent is— 95

The peculiar manner of raising, lowering and supporting the hive by means of the hinges and pegs as above indicated and represented in the drawings and references thereunto.

EDWIN BOOTH.

Witnesses:

JAMES W. CROOK,
HENRY T. CROOK.