

H. & Stedger's

Bee Hive.

Fig 4.

PATENTED
FEB 18 1868

74627

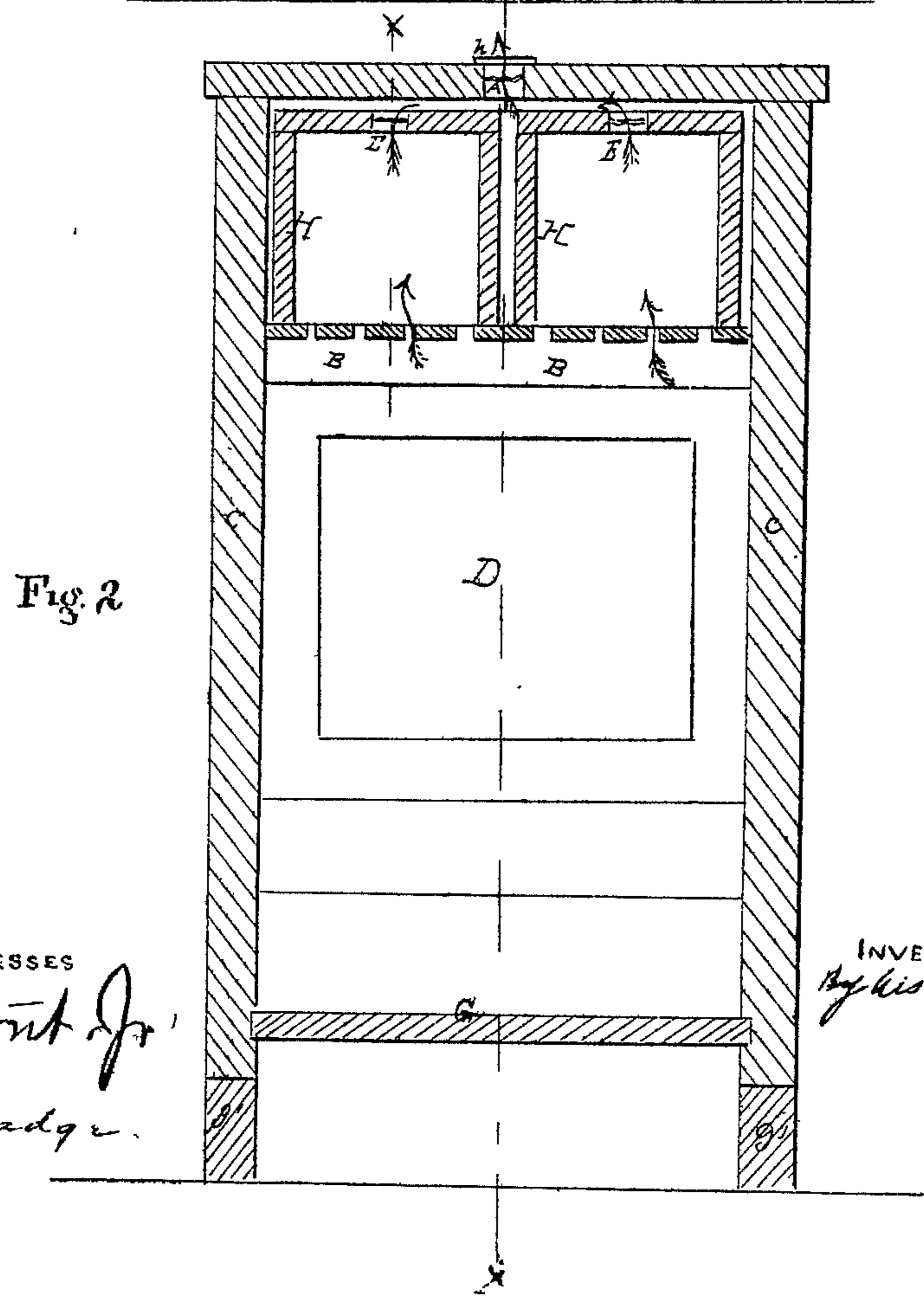
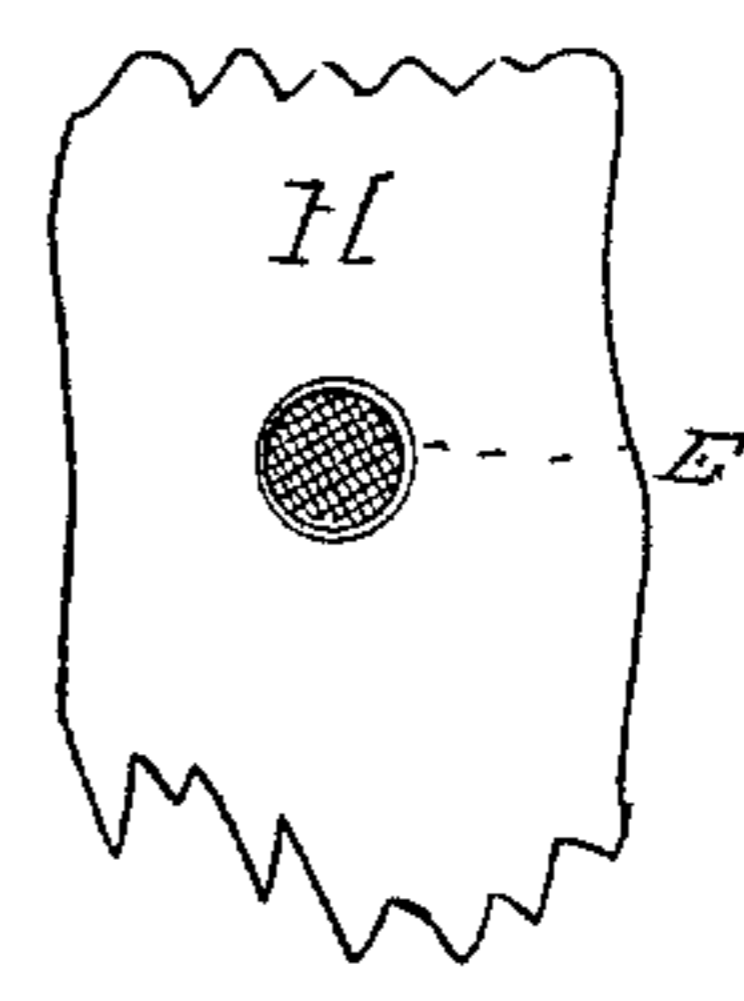
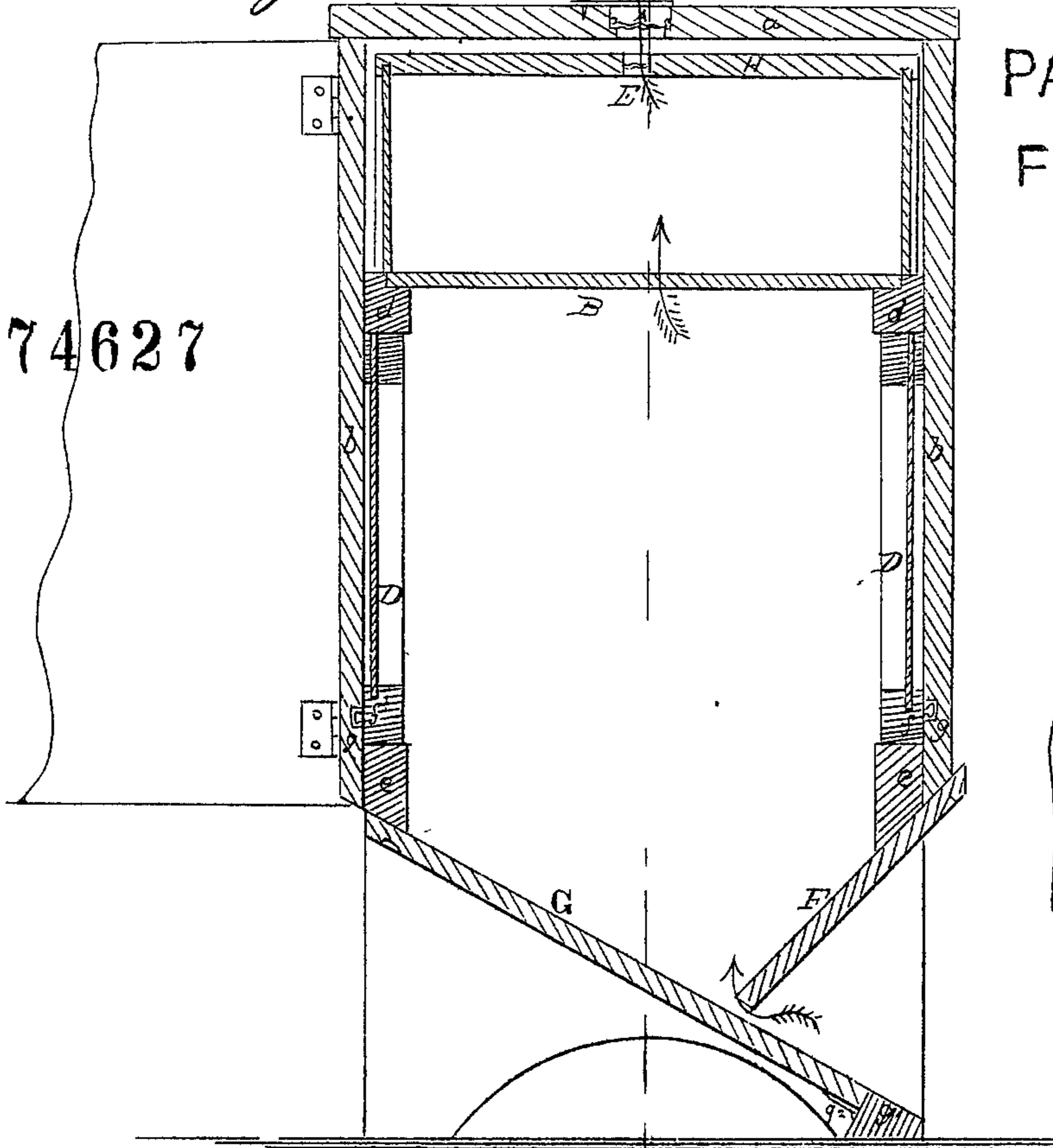


Fig 2

WITNESSES
Amos Flint Jr.
L. C. Ballmaier

INVENTOR *H. A. Stedger.*
 By his atty *H. Stedger*

United States Patent Office.

H. A. STIDGER, OF CARROLLTON, OHIO.

Letters Patent No. 74,627, dated February 18, 1868.

IMPROVEMENT IN BEE-HIVES.

The Schedule referred to in these Letters Patent and making part of the same.

TO ALL WHOM IT MAY CONCERN:

Be it known that I, H. A. STIDGER, of Carrollton, in the county of Carroll, and State of Ohio, have invented a new and useful Improvement in Bee-Hives; and I do hereby declare the following to be a full and correct description of the same, sufficient to enable others skilled in the art to which my invention appertains to fully understand and construct the same, reference being had to the accompanying drawings, which make part of this specification, and in which—

Figure 1 is a vertical section in line *x x*, fig. 2.

Figure 2 is a vertical section in line *y y*, fig. 1; and

Figure 3 is a detached top view of a ventilating-opening in the lid of one of the upper boxes of the hives. Like letters indicate like parts in the several figures.

My invention consists in a novel way of ventilating a bee-hive, and preventing moths from entering the same; also in providing novel devices by which an easy access can be had to the inside of the hive for the purpose of cleaning the same.

In the drawings, *a* may represent the top, *b b* the end, and *c c* the side pieces of a square bee-hive. The end pieces *b b* serve as doors, and are hinged to the pieces *c c*. *B B* are slats resting on pieces *d d*, and divide the hive into two compartments, an upper smaller and a lower larger one. *e e* are cross-pieces, attached to the end pieces *c*, having a slanting bottom, and forming a bearing for the glass frames *D D*, which have knobs *f f* fitting into recesses *g g* in the doors *b b*. *F* and *G* are the bottom boards of the hive; they slide in grooves in the sides *c c*, the board *G* resting against the foot *g¹* of the hive, and the board *F* resting on the board *G*. *H H* are honey-boxes, provided with glass ends. These boxes have an opening, *E*, in their top, covered with wire gauze, and operating in connection with a similar opening, *A*, in the top of the lid *a*, and also covered with wire gauze, as shown in fig. 3. *g²* represents a piece of woollen cloth, attached to the bottom of the lower end of the board *G*. *h* represents a hinged cover, over the opening *A*.

One of the most important features in raising bees is the proper ventilation of the hives, so that the heated foul air and moisture may be drawn off. To effect this is the object of my invention. By drawing out or raising the board *F*, a draught is created, the air passing between the slats *B*, through the boxes *H*, and their openings *E*, and the opening *A* in the top of the hive. It will be readily understood that the draught can easily be regulated by pushing in or drawing out the board *F*, and by opening or closing the aperture *A*, more or less, by means of the hinged cover *h*.

If it is desired to take out the boxes *H*, a thin metal or wooden plate may be passed between the boxes and the strips *B*, when the former can be removed, the plate preventing any of the bees from passing from the lower into the upper compartment.

Very frequently dirt accumulates in the hive, which it becomes necessary to remove. By opening the doors *b b*, the inside of the hive can be watched through the glass frames *D D*, and, by removing the latter, access is had to it, so that dirt can be scraped off from the sides, and, falling on to the bottom board *G*, can be easily removed.

This bottom board *G* is provided at its lower edge with a strip of woollen cloth, *g²*. When this board is drawn a very little bit from the foot *g¹*, the moths or bee millers cannot enter the hive, as they fall into the space below the bottom board *G*, and cannot crawl over the cloth to get back.

Having thus described my invention, what I claim as new, and desire to secure by Letters Patent, is—

1. The combination of the ventilating-openings *A-E* with the sliding bottom board *F* and hinged cover *h*, substantially as and for the purposes set forth.
2. The movable glass frames *D*, in combination with the doors *b b* and sliding bottom board *G*, substantially as and for the purposes set forth.
3. The strip of cloth *g²* on the under side of the lower end of the bottom board *G*, in combination with the foot *g¹* of the bee-hive, substantially as and for the purposes set forth.

H. A. STIDGER.

Witnesses:

J. ULMAN,
GEORGE McDANIEL.