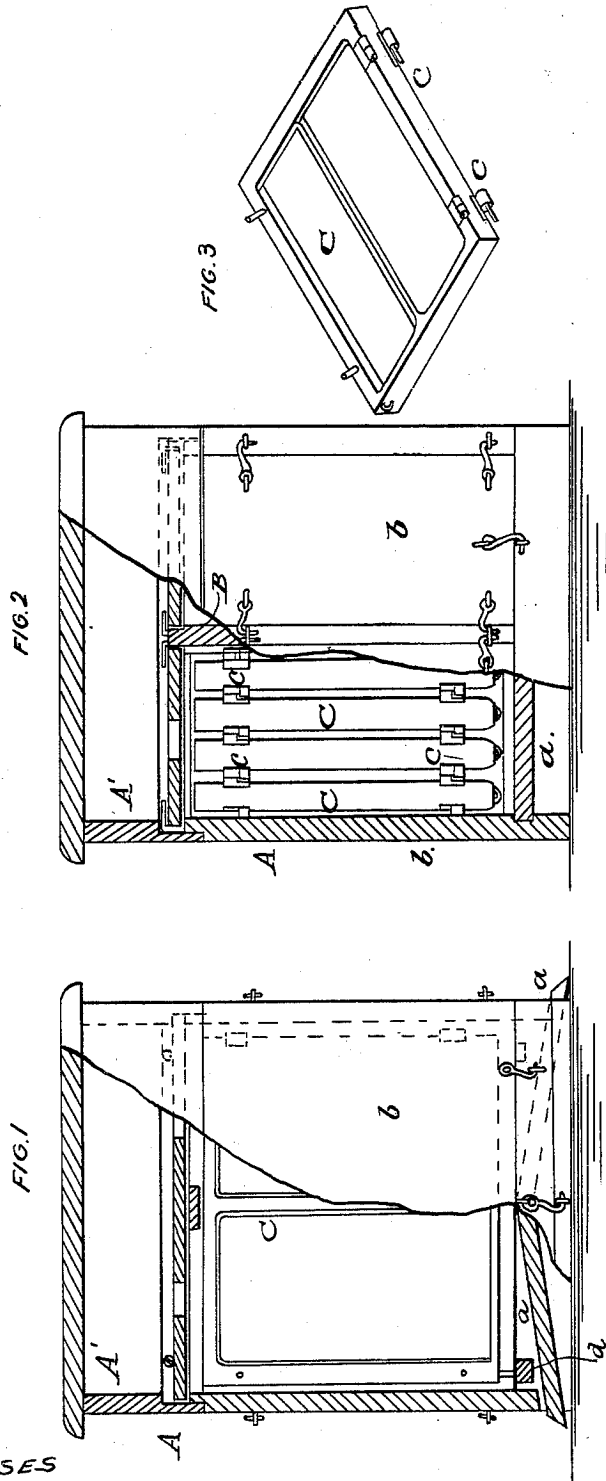


O. FIELD.  
Bee Hive.

No. 82,101.

Patented Sept. 15, 1868.



WITNESSES  
Wm. A. Morgan  
D. C. Cotton

INVENTOR  
O. Field  
per  
Mumford  
attorney

# United States Patent Office.

ORRIN FIELD, OF INDEPENDENCE, IOWA.

Letters Patent No. 82,101, dated September 15, 1868.

## IMPROVEMENT IN BEE-HIVES.

The Schedule referred to in these Letters Patent and making part of the same.

### TO ALL WHOM IT MAY CONCERN:

Be it known that I, ORRIN FIELD, of Independence, in the county of Buchanan, and State of Iowa, have invented a new and useful Improvement in Bee-Hives; and I do hereby declare that the following is a full, clear, and exact description thereof, which will enable those skilled in the art to make and use the same, reference being had to the accompanying drawings, forming part of this specification.

This invention relates a new and improved bee-hive, and it consists in a peculiar construction of the hive, the manner of arranging the comb-frames, &c., whereby a very desirable hive is obtained, all the comb-frames rendered very accessible, and all of them rendered capable of being removed, whenever necessary.

In the accompanying sheet of drawings—

Figure 1 is a side elevation of my invention, partly in section.

Figure 2, a front view of the same, partly in section.

Figure 3, a detached perspective view of a comb-frame.

Similar letters of reference indicate corresponding parts.

A represents the box or case of the hive, of rectangular form, and of any suitable dimensions.

The bottom of the hive is composed of two inclined parts *a a*, the elevated edges abutting against each other at the centre of the bottom, (see fig. 1.)

The sides *b* of the hive are all removable or detachable, and surmounted by a cap, *A'*, two opposite sides of the hive being each composed of two parts, the adjoining edges of which abut against a fixed comb-frame, *B*, at the centre of the hive.

The other comb-frames *C* are all movable, and they are connected one to the other, at one edge or side, by hinges or joints *c*, which admit of the frames being opened and closed, and removed or detached without any trouble or difficulty whatever, the sides of the hive, any or all of them, as may be required, being let down, to give the operator full control over the movement or manipulation of the comb-frames. The frames *C*, besides being hinged to each other, are connected with the central fixed frame *B* by means of detachable joints, as will be clearly understood by reference to fig. 2 of the accompanying drawings.

The bee-entrances *d* are near the outer edges of the parts *a a* of the bottom, and formed simply by allowing spaces between the parts *a* and the lower edges of the sides *b*, which are directly over said parts, (see fig. 1.)

I do not claim broadly hinged comb-frames, for they have been previously used; but

I do claim as new, and desire to secure by Letters Patent—

The combination, with the central fixed comb-frame *B*, of the detachable hinged comb-frames *C*, all arranged substantially as herein shown and described for the purpose specified.

The above specification of my invention signed by me, this 6th day of April, 1868.

ORRIN FIELD.

Witnesses:

SAMUEL SUFFICOL,

JOHN J. HILL.