

(No Model.)

J. JARDINE, Sr.
BEE EXIT ATTACHMENT FOR HIVES.

No. 579,983.

Patented Apr. 6, 1897.

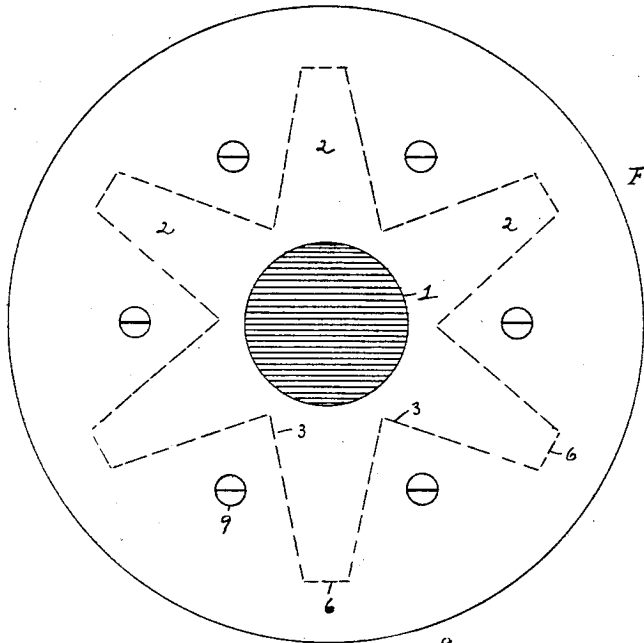


Fig. 1.

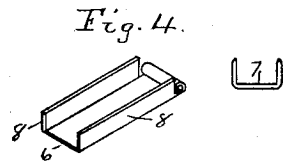


Fig. 4.

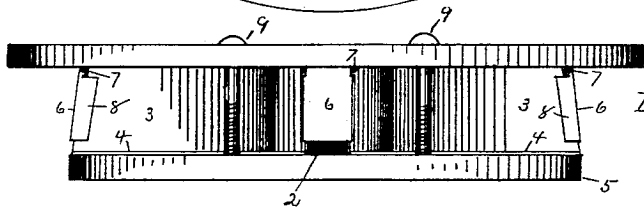


Fig. 2.

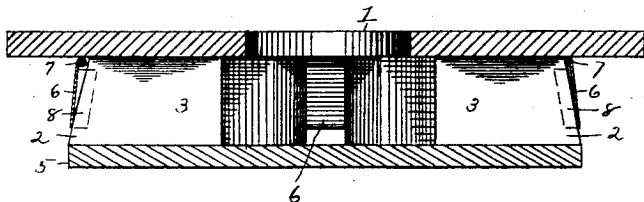
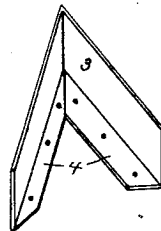


Fig. 3.

Figs. 5.



Witnesses
B. C. Hayes
J. R. Hayes

Inventor
James Jardine Sr.
By *Glascock & Co.*
Attorneys.

UNITED STATES PATENT OFFICE.

JAMES JARDINE, SR., OF ASHLAND, NEBRASKA.

BEE-EXIT ATTACHMENT FOR HIVES.

SPECIFICATION forming part of Letters Patent No. 579,983, dated April 6, 1897.

Application filed July 6, 1896. Serial No. 598,109. (No model.)

To all whom it may concern:

Be it known that I, JAMES JARDINE, Sr., a citizen of the United States, residing at Ashland, in the county of Saunders and State of Nebraska, have invented a certain new, useful, and valuable Improvement in Bee-Exit Attachments for Hives, of which the following is a full, clear, and exact description.

My invention has relation to bee-exit attachments for hives; and it consists in the novel construction and arrangement of its parts, as hereinafter described.

In the accompanying drawings, Figure 1 is a top plan view of the attachment. Fig. 2 is a side view of the same. Fig. 3 is a sectional view of the same. Fig. 4 is a detail perspective view of the swinging door and staple-hinge for the same, and Fig. 5 is a detail perspective view of the metallic partition used in the attachment.

The attachment is adapted to be placed under the hive or under the sections of the hive. The top of the attachment is provided with the central perforation 1. The attachment is provided with a number of radially-extending passages 2 2, said passages at their inner ends merging into a common compartment, said compartment being under the perforation 1. The outer ends of the passages 2 2 converge upward, as shown in Figs. 2 and 3. The said passages 2 2 are formed by the angular metallic strips 3. (See Fig. 5.) Said strips are provided along their lower edges with the flanges 4, and said flanges 4 are secured to the base-plate 5 of the attachment. At the outer end of each passage 2 is located a swinging door 6. Said doors are preferably hinged at their tops to the staple 7, and said staples are then driven in the top in such manner as to permit the doors to swing over the outer ends of the passages 2. The doors are preferably made of sheet metal, each door having along its perpendicular edges the flange 8. Said flanges 8 8 extend back on each side of the passages 2. There is a space between the lower ends of the doors and the base 5. This space lets in the light and directs the bees to the outlet.

The top of the attachment is secured to the

base 5 by means of the screws 9, which connect the said parts between the outer sides of the passages 2 2, as indicated in Figs. 1 and 2.

The doors 6, when closing the outer ends of the passages 2, are not exactly in a perpendicular position, but they incline slightly upward toward the center of the attachment, and thus by the force of gravity the lower end of the door comes in contact with the end of the passages and effectually closes the same.

The bee passes from the hive down through the perforation 1 and then along the passages 2 2 toward the light under the doors 6. He then pushes the lower ends of the doors out, and thus the bee makes his exit. After the bee passes out the door will swing back and close the outer end of the passage. The side flanges of the doors prevent any insects from passing in the passage as the bees are coming out. The ends of the passages 2 are set back under the top of the attachment and are thus protected from the weather.

Having described my invention, what I claim as new, and desire to secure by Letters Patent, is—

A bee-exit consisting of a top having a central perforation, and a bottom forming a floor, angle-strips placed at regular intervals between the said top and bottom, said strips forming perpendicular sides of outwardly-extending passages, the ends of said strips being inclined, a swinging door normally closing the outer end of each passage, each of said doors being hinged at its top and each door having along its perpendicular sides, flanges, said flanges adapted to pass along the sides of the said strips, the ends of the strips adapted to support the doors in an inclined position, a space being left between the lower edge of each door and the floor of the passage.

In testimony whereof I affix my signature in presence of two witnesses.

JAMES JARDINE, SR.

Witnesses:

O. D. HARFORD,
T. O. MOON.