

G. W. BACON.
BEEHIVE.
APPLICATION FILED DEC. 16, 1919.

1,370,775.

Patented Mar. 8, 1921.

2 SHEETS—SHEET 1.

Fig. 1.

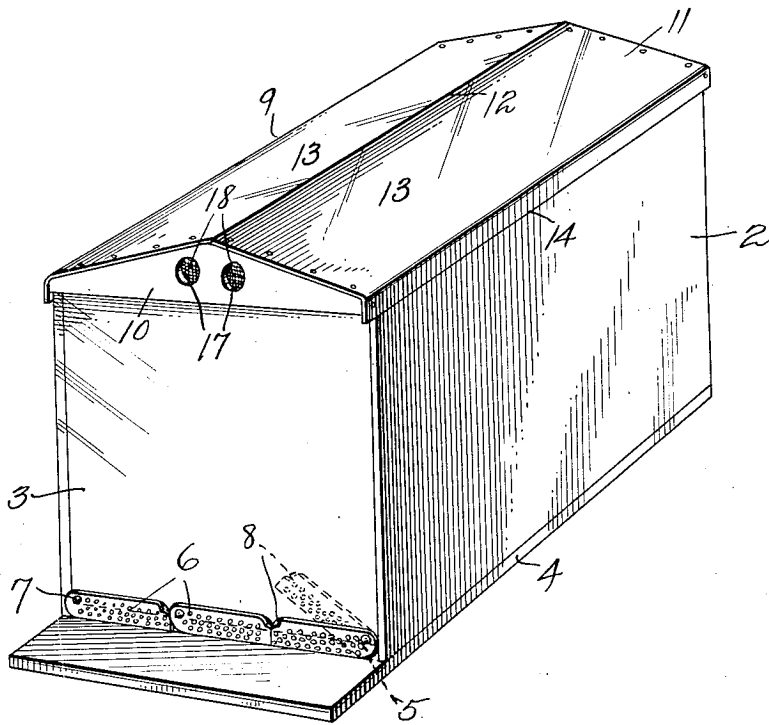
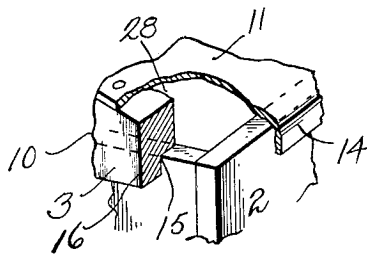


Fig. 2.



364

Inventor
Geo. W. Bacon.
E. W. Anderson for
Attorney

1,370,775.

Patented Mar. 8, 1921.

2 SHEETS—SHEET 2.

Fig. 3.

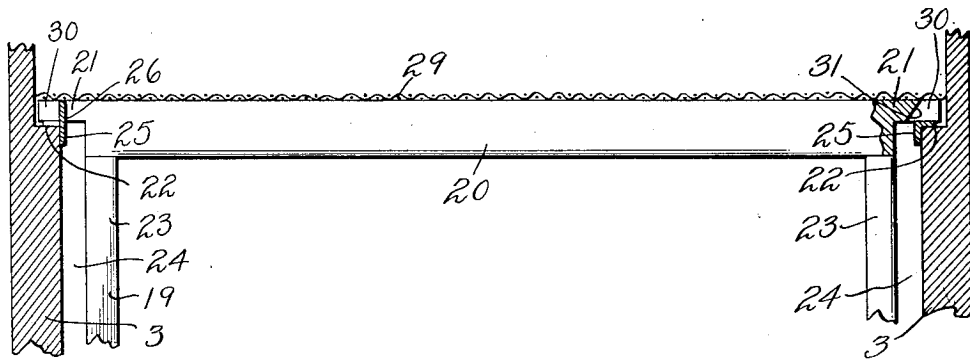


Fig. 4.

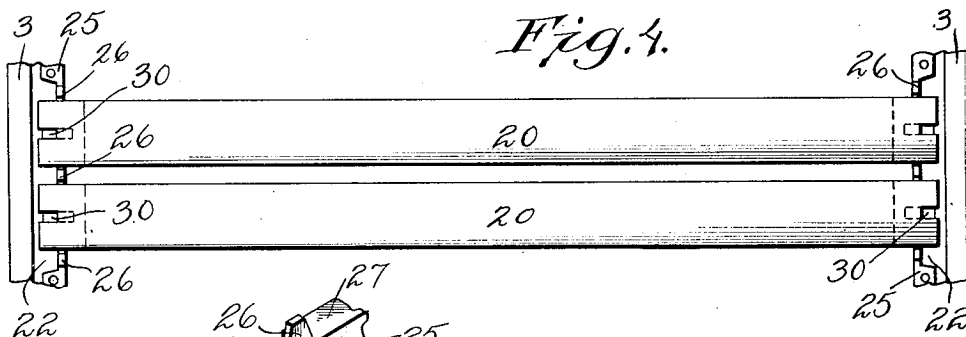


Fig. 5.

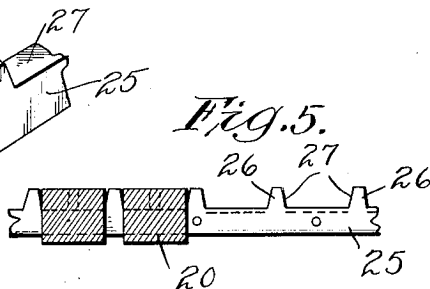


Fig. 6.

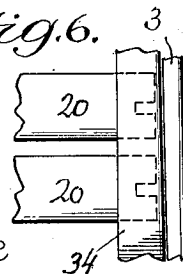


Fig. 7.

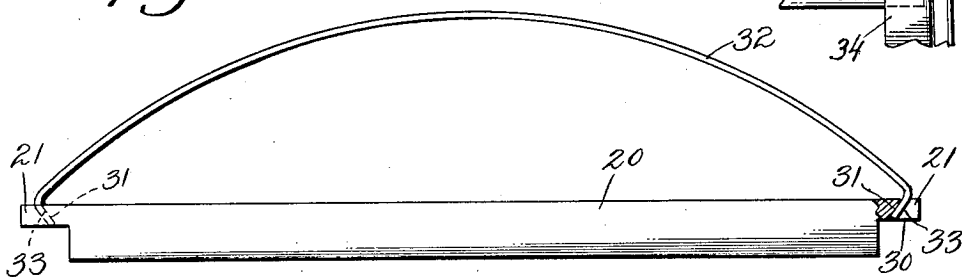
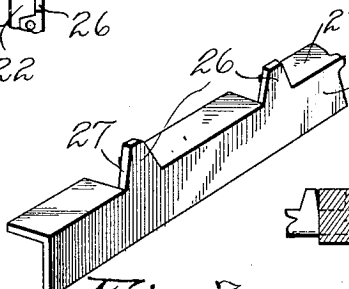


Fig. 8.

334

Inventor
Geo. W. Bacon
E. W. Anderson for
Attorney

UNITED STATES PATENT OFFICE.

GEORGE W. BACON, OF GRAND JUNCTION, COLORADO.

BEEHIVE.

1,370,775.

Specification of Letters Patent.

Patented Mar. 8, 1921.

Application filed December 16, 1919. Serial No. 345,259.

To all whom it may concern:

Be it known that I, GEORGE W. BACON, a citizen of the United States, resident of Grand Junction, in the county of Mesa and State of Colorado, have made a certain new and useful Invention in Beehives; and I declare the following to be a full, clear, and exact description of the same, such as will enable others skilled in the art to which it appertains to make and use the invention, reference being had to the accompanying drawings, and to letters or figures of reference marked thereon, which form a part of this specification.

Figure 1 is a perspective view of the invention.

Fig. 2 is a detail perspective view of one corner of the hive partly broken away.

Fig. 3 is a detail side view of one of the comb frames, partly broken away, showing parts of the hive also partly broken away.

Fig. 4 is a plan view of the same, showing two comb frames.

Fig. 5 is a detail cross section of two comb frames and showing one of the angular bars.

Fig. 6 is a detail plan view of one end portion of two of the comb frames, showing the protector strip for the ends of the spacing lugs of the angular bar at this end of the hive.

Fig. 7 is a detail perspective view of one of the angular bars partly broken away.

Fig. 8 is a detail side view of a comb frame partly in section and showing a lifting device in engagement therewith.

The invention has relation to bee hives, and it consists in the novel construction and combinations of parts, as hereinafter set forth.

In the accompanying drawings illustrating the invention, the numeral 2 designates the body of the hive, having end wall 3 which terminates short of the bottom 4, to leave a longitudinal slot or opening 5 for the entrance and exit of the bees, said opening being controlled by doors 6, three of which are preferably employed, each door hinged at one end at 7, and provided with a downturned upper corner 8 for use as a handle.

The hive body is provided with a cover 9, having wooden ends 10, and a sheet metal top 11 of gable form, said top bent centrally to form the ridge 12, the sides 13 of which are inclined oppositely, the latter being at

their lower ends bent vertically downwardly at 14, to lap over the side of the body 2 in close fitting manner, to form a rain-tight joint, the ends 10 having inner longitudinal grooves 15 thereby providing rabbeted portions 16, which lap over the end walls of the body 2 for the same purpose, that is to make a rain-tight or weather-tight joint.

The ends 10 are provided with perforations 17, covered on the inside by screen cloth 18, to admit air for ventilating purposes, the perforations affording convenient handholds for lifting the top from the body.

Within the hive are located the comb frames 19, extending longitudinally of the hive body, these frames being constructed as follows:

These frames are each hung from an upper comb frame bar 20, having end extensions 21 supported from longitudinal shoulders 22 formed in the ends 3 of the hive body, the end frame bars 23 of the comb frames being spaced apart from said end wall by intervals 24. A metal strip 25, of right-angle form in cross-section, is secured upon the shoulder 22 at each end of the hive, and is interposed between the same and the aforesaid end extension, said strip having vertical lugs 26 struck upwardly therefrom at intervals gaged by the width of the comb frames, the end extensions of which fit between said lugs and are thereby suitably spaced apart. These lugs have inclined or beveled sides 27 to facilitate placing of the end extensions of the comb frames therebetween, and disengagement therefrom in lifting.

The bees located in the hive body will seek to pass upwardly above the comb frames in the ventilating space 28 of the cover, and to prevent this, a screen cloth cover 29 is placed horizontally over the comb frames.

Each of the upper comb frame bars 20 is provided with an open-end slot 30 in each end extension thereof, said slot having an inclined inner wall 31, whereby a lifting device or bowed wire 32 may be engaged with the comb frames to lift the same out of the hive, the cover of which is previously removed. This lifting device or wire is provided with inturned inclined ends or hooks 33, which engage the aforesaid open-end slots and fit the inclined inner walls of the slots, being sprung in place in the slots.

It is necessary to prevent the bees from

waxing the end extensions 21 to the hive walls 25 where they approach the latter, and the spacing lugs 26 will prevent the bees from passing through between the ends of the frames to said end extensions, and the screen cloth cover 29 will prevent the bees from passing upwardly above the comb frames into the ventilating space 28 and therefrom to the said extensions. When a super or extracting box is put on the hive the screen wire cloth is removed so the bees can enter the super or extracting box, and placed on the sections in the super or on the extracting frames to prevent sticking or soiling the tops of frames or sections. Then to protect the ends of the frames in the hive below a narrow strip of sheet metal or screen wire cloth 34 is placed over the ends of the frames so as to cover the ends of the spacing lugs.

The comb frames are made the same width throughout for top, bottom and end bars, so that the uncapping knife used to separate the comb from the frame will not cut comb any more at the bottom of the frame than at the top, thereby avoiding necessity for any extra comb to be made by the bees. In other words, there are no offsets or projections on the comb frames to prevent the knife from making a smooth and even cut at the point of juncture of the comb with the frame.

I claim: —

1. In a bee hive, a body having shoulders, and comb frames supported thereby, said shoulders having sheet metal angular bars secured thereto and provided with upstanding beveled lugs, each comb frame having end extensions resting upon said bars between said lugs and being spaced apart by the latter, said end extensions having open-end slots provided with inwardly inclined inner walls, adapted for engagement by a lifter device, and a horizontal screen cover for all of the comb frames, said lugs preventing passage of the bees between the ends of the comb frames to said end extensions, and said screen cover preventing passage of the bees above the comb frames to said extensions.

2. In a bee hive, sheet metal angular support bars having upstanding bevel edged lugs, and comb frames spaced apart by and engaging said lugs and resting upon said bars, each comb frame having end extensions provided with open-end slots having beveled inner walls adapted for engagement by a lifter device.

In testimony whereof I affix my signature in presence of two witnesses.

GEORGE W. BACON.

Witnesses:

C. L. DIXON,
D. H. FRANCIS.